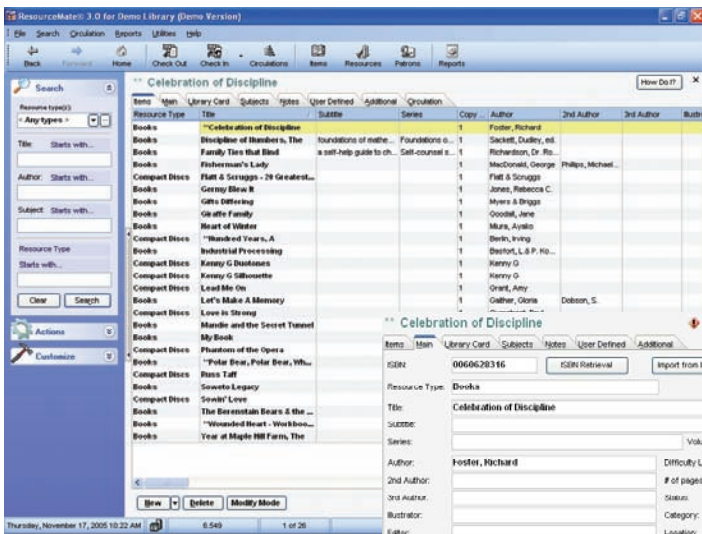




# ResourceMate®

# 3.0

The Solution to Cataloging, Searching and Circulating... Anything



## Cataloging

- Holds unlimited item and patron records, great for libraries with a few hundred items to tens of thousands of items.
- Over 50 cataloging fields that you can customize to meet your specific needs. Even make your own fields. Anything you want to track can be tracked.
- ISBN Retrieval\* allows for instant lookup of individual ISBN numbers from the Library of Congress. This feature makes cataloging quick and accurate.
- Automatically or manually establish multiple copies.
- View and modify records easily on the Power Grid. Get a comprehensive view of your items and patrons.
- Let ResourceMate® walk you through the record entry process with Step-By-Step Item Add.
- Print Library Cards and Labels.
- Over 150 built-in Reports with the ability to create your own. Print them, e-mail them, or export them to a number of different formats including pdf and html.

## Searching

- Patron Search that can be run independently of ResourceMate®. Includes security to keep your database safe.
- 3 search methods for patrons of various experience levels, with fuzzy searching available for all.
- Unlimited searchable subject keywords on items, as well as the ability to search by any cataloging field.
- Includes comments for patrons to view, and results that can be selected and printed.
- ResourceMate® Web Search (Add On Module) - anyone, anywhere can search your library, anytime. Ask about our inter-library search.

## Circulating

- Check-Out and Check-In can be batched so user can confirm transactions before applying them.
- All circulation at a glance - easily see Overdues. Sort by Patron, Item, or Due Date.
- Manually add to the Waiting/Reserve List.
- Renew remaining items for a patron.
- Print or e-mail overdue notices

## ResourceMate® Plus

- Utilize bar coding for fast circulation.
- Spread the workload - Merge features allow volunteers to enter information on their own computers for future merging on the main computer.
- Track and report history of all circulation activity (great for budget-planning and statistical information).
- Extensive Security.
- Accumulate Fines.
- Import from MARC, Librarian's Helper, EntryMate, Ascii, Excel, Access.
- Year end Inventory processing.

## ResourceMate® Multi-User

Although all versions of ResourceMate® can be used on a network as a single-user application, ResourceMate® 3.0 has a Multi-User version that can be added to either ResourceMate® 3.0 Regular or ResourceMate® 3.0 Plus. Our Multi-User version can be installed on a network so that multiple people can maintain the database simultaneously (add/change items, check out, check in). ResourceMate® Multi-User comes with licenses for three simultaneous users. Additional licenses can be purchased.

Jaywil Software Development Inc.  
1-800-815-8370 Fax: 519-837-8656  
www.resourcebate.com  
info@resourcebate.com

RESOURCEMATE® REGULAR **\$195**  
RESOURCEMATE® REGULAR MULTI **\$395**

RESOURCEMATE® PLUS  
Includes Bar Coding, Volunteers Entering on Home Computer, Extensive Security, MARC Import/Export **\$395**

RESOURCEMATE® PLUS MULTI **\$595**

ResourceMate® is a registered trademark of Jaywil Software Development Inc.

All other trademarks and registered trademarks are the property of their respective corporations.

Information subject to change without notice

\* Available to registered users with support up to date